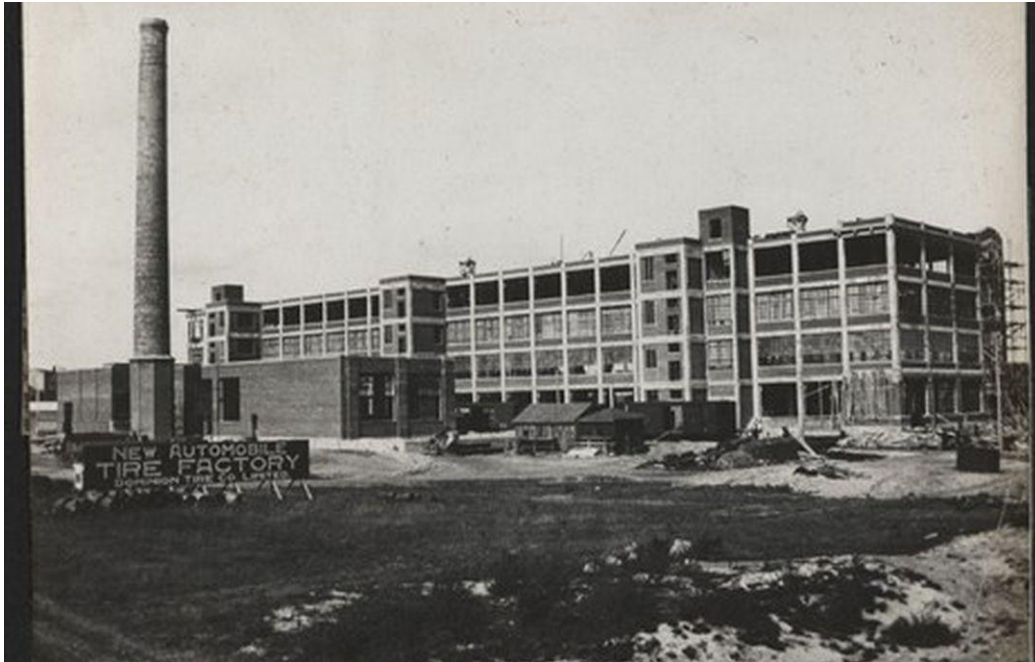


Rubber Worker Project Information Session



The Occupational Health Clinics for Ontario Workers (OHCOW)

Sept 17th, 2025

Outline

- Welcome and Introductions
 - United Steelworkers (USW), Unifor
 - Office of the Worker Advisor (OWA)
 - OHCOW
- Why are we here?
- Project Updates
- What can we support you with today?
- Questions & Discussion



Personal Introductions

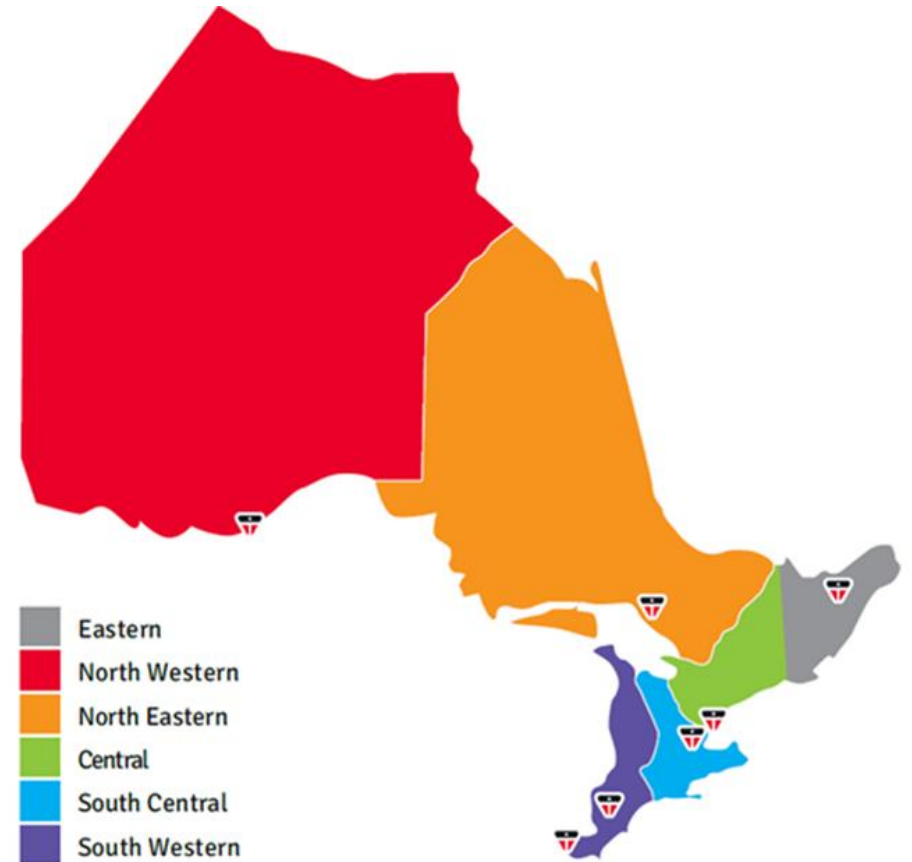
- Union leadership
 - Sylvia Boyce, Gord Assman – USW
 - Rob Milford – Unifor
- Office of the Worker Advisor (OWA)
 - Darcy Stewart, Mark Evans, Jessica Persaud
- OHCOW
 - Marilyn Lee-Hannah, Janet Latimer (Not Present), Michelle Tew, Murray Lawrence, Masood Ahmed, Dr. Mike Pysklywec, Dr. Sarah Rhodes

Introduction to OHCOW

Is there a link between my illness and my work?

How do I improve safety in my workplace?

- Client Service Coordinator
- Occupational Health Coordinator
- Occupational Health Nurse
- Occupational Health Physicians
- Occupational Hygienists
- Occupational Ergonomists
- Project Directors, Executive Directors



The Challenge

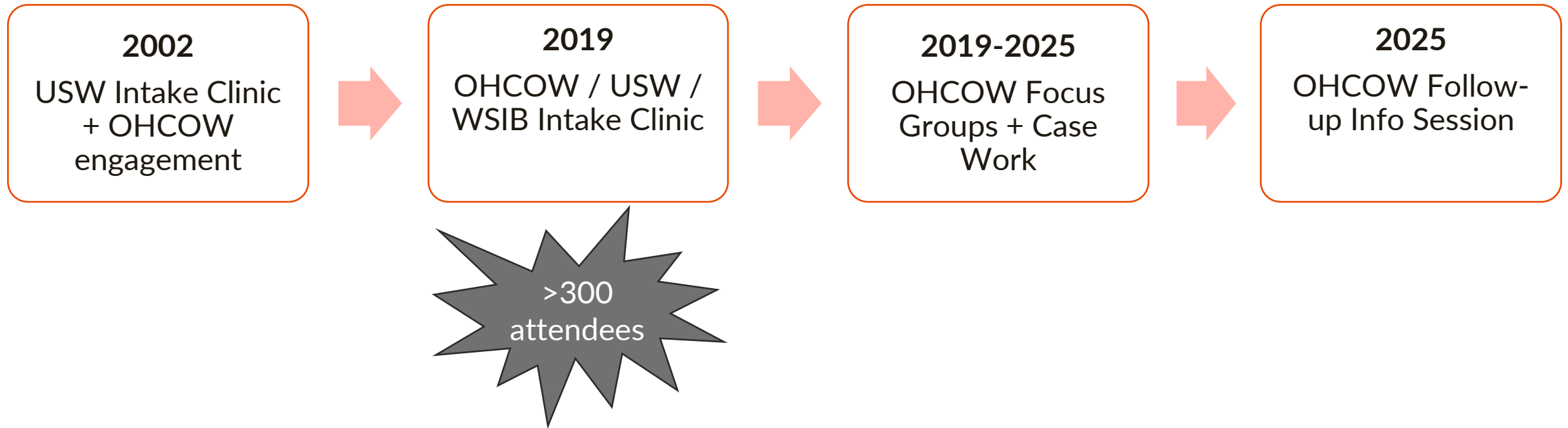
Worker health is dependent on many contributing factors - at work and outside of work.

Each disease is unique and can manifest differently from person to person. Diseases are caused by different sets of “exposures.”



The CPH-NEW Total Worker Health model of integration.

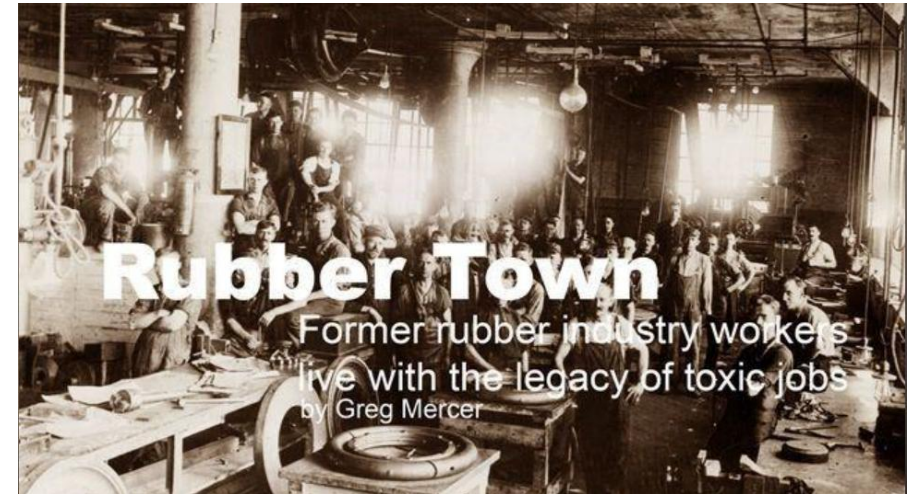
History: OHCOW Rubber Worker Project



Why are we here? Workers' Voices

Many different illnesses have been reported, including but not limited to:

- **Cancers**
 - Gastrointestinal (Stomach, Esophageal, Colon, Liver, etc.)
 - Prostate
 - Lung
 - Bladder
 - Hematological (Non-Hodgkin's Lymphoma, Leukemia)
 - Head and Neck (Laryngeal, Pharyngeal, Salivary Gland)
- **Respiratory Issues (COPD, Asthma)**
- **Parkinson's Disease**
- **Noise-induced hearing loss**

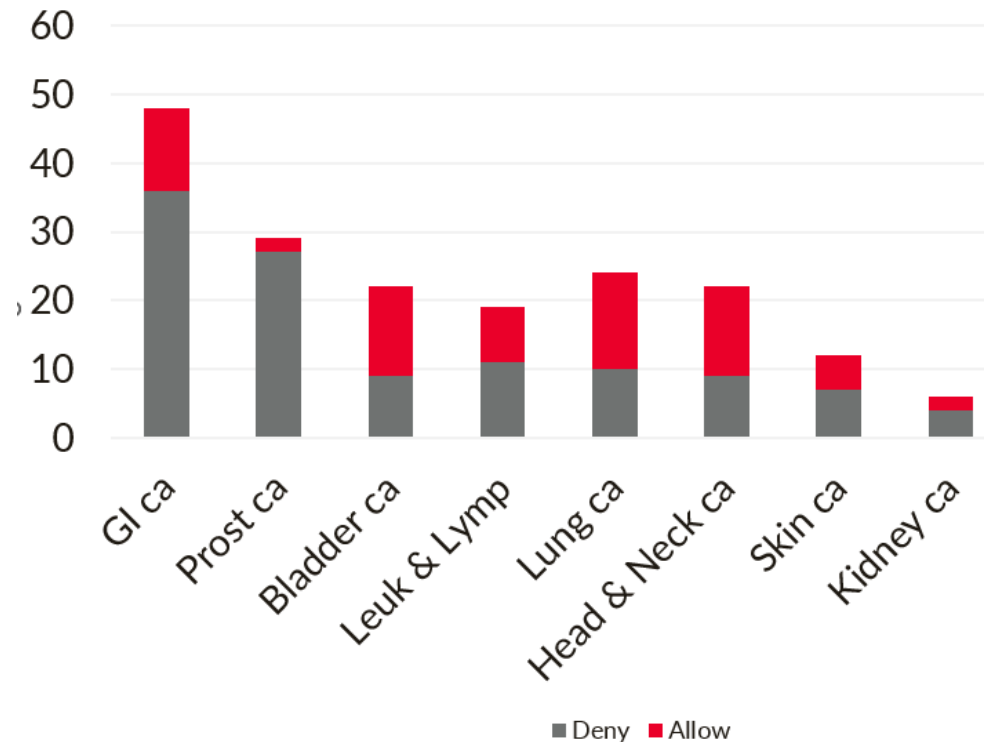


Workers' Voices: WSIB Claim Diagnoses

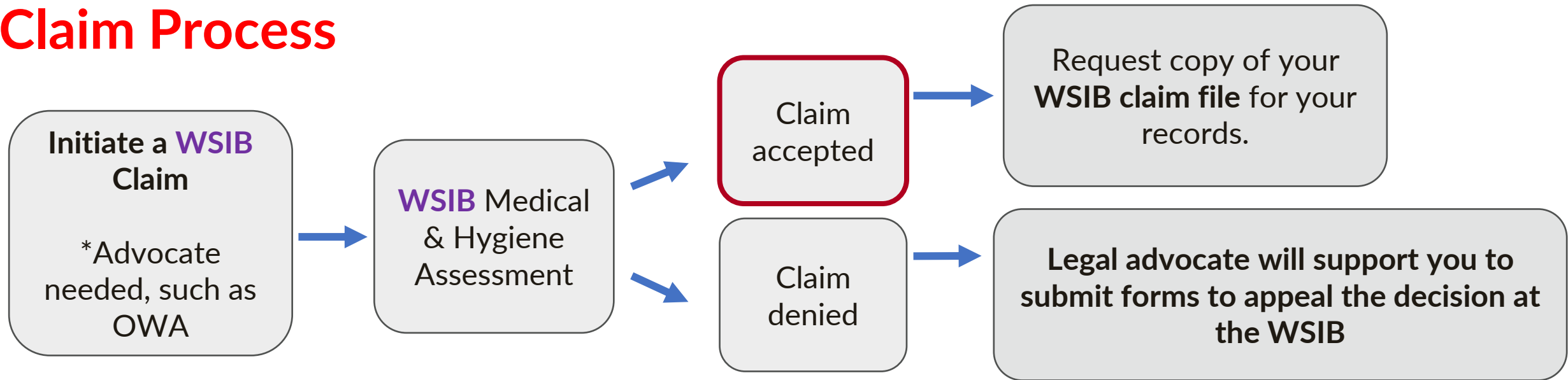
Top 5 Illnesses:

- Gastrointestinal Cancers
- Prostate Cancer
- Respiratory Disease
- Bladder Cancer
- Hematological Cancers

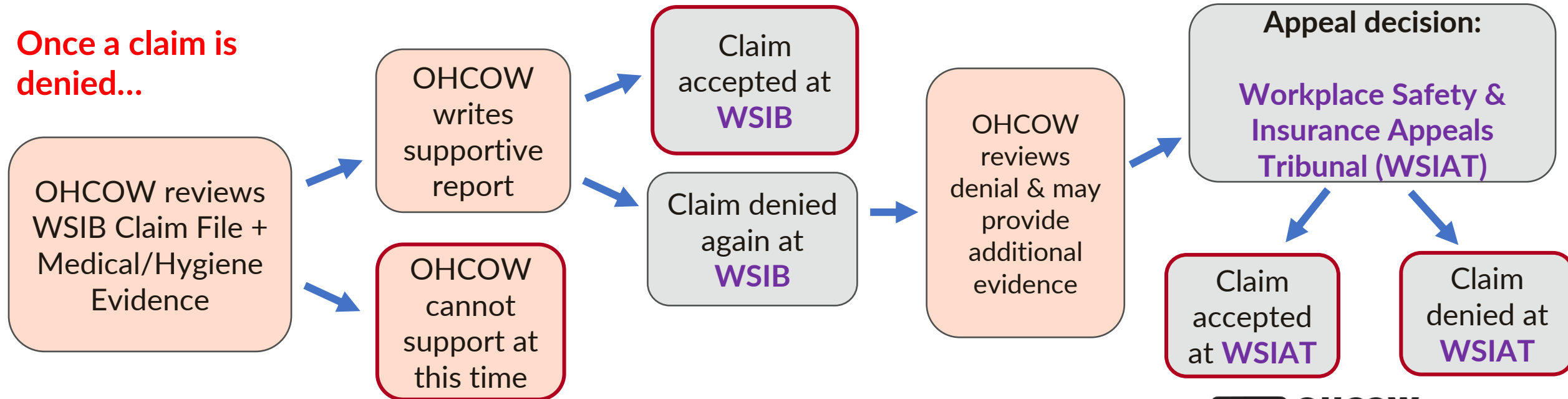
Number of Cancer Cases:
Allowed vs. Denied at WSIB



Claim Process



Once a claim is denied...



Project Updates: Case Support Continues

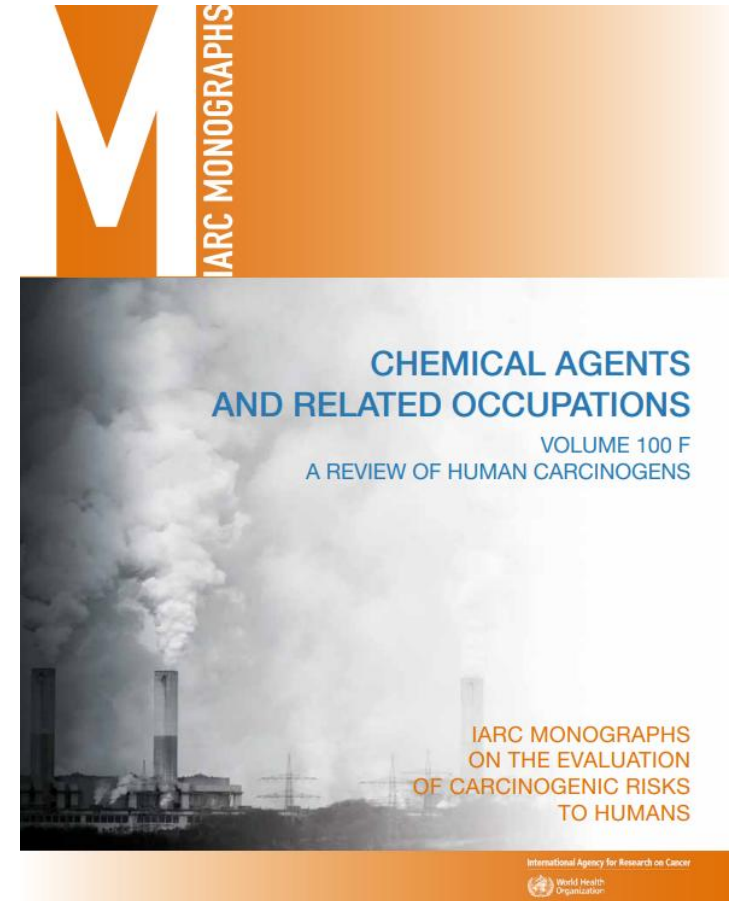
- Conducting health and work history interviews
- Connecting workers to the OWA for **WSIB claim initiation and legal support**
- Compiling **medical and hygiene evidence** for claims (where possible), including conducting **new research.**

*Unfortunately, we cannot support all claims.



Project Updates: Research Continues

- Creating a **RWP** research database to compare cases with similar diagnoses and exposures
 - *Always interested in historical documents
- Reviewing **WSIB** claim files (accepted vs. denied)
- Reviewing current **scientific literature**
- Publishing our own **research studies**



Example: IARC Table (Leukaemia)

List of classifications by cancer sites with <i>sufficient</i> or <i>limited evidence</i> in humans, IARC Monographs Volumes 1–138 ^a		
Cancer site	Carcinogenic agents with <i>sufficient evidence</i> in humans	Agents with <i>limited evidence</i> in humans
Adult T-cell leukaemia/lymphoma (ATLL) ^e	Human T-cell lymphotropic virus type 1 Thorium-232 and its decay products X- and Gamma-radiation	
Leukaemia: all combined	1,3-Butadiene Fission products, including strontium 90 Rubber manufacturing industry Thiotepa	Chloramphenicol Diazinon Nitrogen mustard Petroleum refining (occupational exposures in) Radioiodines, including iodine-131 Radon-222 and its decay products Styrene Tacrolimus

Research Highlight: Salivary Gland Cancer

SGC Systematic Literature Review

- Summary of research studies investigating the connection between SGC and exposure to occupational and/or environmental hazards.
- Manuscript is under review. A copy will be shared with the group once published.

SGC Case Series

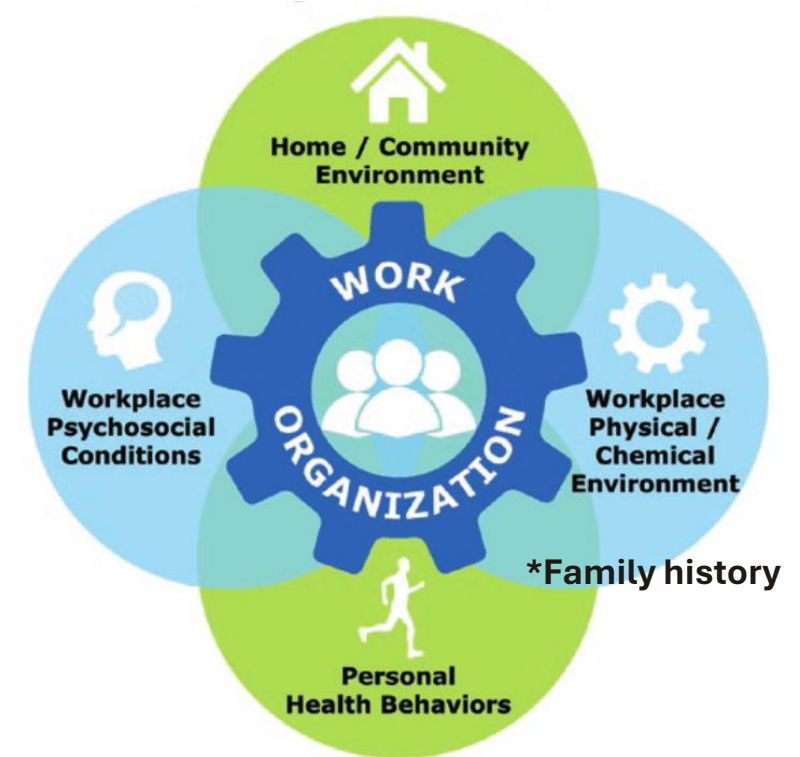
- Summary of the work and health experiences of rubber and plastics workers with SGC.
- We have a first draft of the article and are working to incorporate new case information prior to publishing.
- We will be contacting participants with updates soon.



MLITSD Highlights

WSIB Scientific Advisory Table

- Panel of scientists chosen to advise the WSIB
- How can the WSIB better weigh the contribution of multiple exposures (e.g. smoking and asbestos)?
- How can we improve the process WSIB uses to synthesize available evidence?



The CPH-NEW Total Worker Health model of integration.

What can we support you with today?

- Sign up with OHCOW and/or the OWA
- Initiate a WSIB claim
- Meet privately with a doctor, nurse, or hygienist
- Ask questions or share information about industry hazards



Kaufmann Rubber Workers

Thank you! What comes next?



- Please keep us posted on changes to your health and work status (e.g. diagnoses, jobs/exposures, WSIB status)
- If you do not feel ready or comfortable to register with us today but you may be interested in the future, please contact us for an anonymous consultation.

Email: rw@ohcow.on.ca

Phone: 437-214-1908

Open Discussion

Questions about OHCOW Process?

Questions about WSIB/Legal Process & Policy?

Personal workplace experiences to share?

Resource Creation: What else would you like to see/know?