

Work Safely

Pesticide First Aid

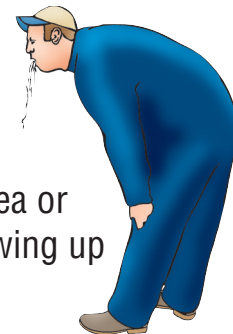
If you experience any signs or symptoms of pesticide exposure

- Stop what you are doing
- Leave the area
- Go see your boss or first aider right away.

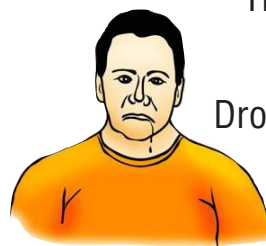
OR

- Call to the nearest person for help
- Tell that person to go and get your boss and the First Aider right away.

Nausea or
Throwing up



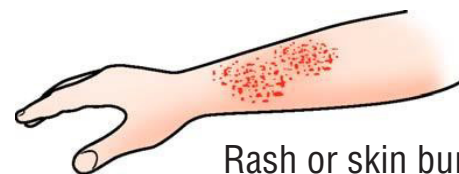
Drooling



Chest pain,
trouble breathing



Rash or skin burning



If you see someone with these signs or symptoms:

- Call your boss and the First Aider for help.
- They may call the Ontario Poison Centre, or **9-1-1**



1-800-268-9017
416-813-5900

Ontario
Poison
Center

Centre
antipoison
de l'Ontario



Occupational
Health Clinics
for Ontario
Workers Inc.

Centres de
santé des
travailleurs (ses)
de l'Ontario Inc.



Ontario