



Infection Prevention through Complexity Science

Leah Gitterman, Manager, Senior Consultant

Front-Line Ownership

- Complexity science-based approach
- Engage those who are “touching the problem” to arrive at local solutions
- Fostering ownership not “buy-in”

We know *what* we need to do but often do not know *how* to do it



**culture eats
strategy for
breakfast**

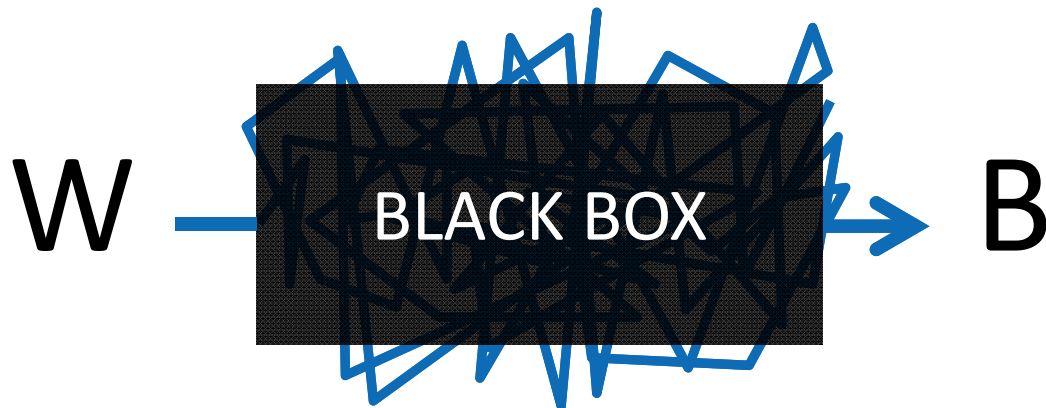
Traditional Healthcare Culture

- Need to get things done immediately
- Evidence-based practice (scientific proof)
- Information and data are trusted
- Culture change is complicated
- Leaders need to ‘step-up’
- Top-down leadership
- “Standardize and roll it out”

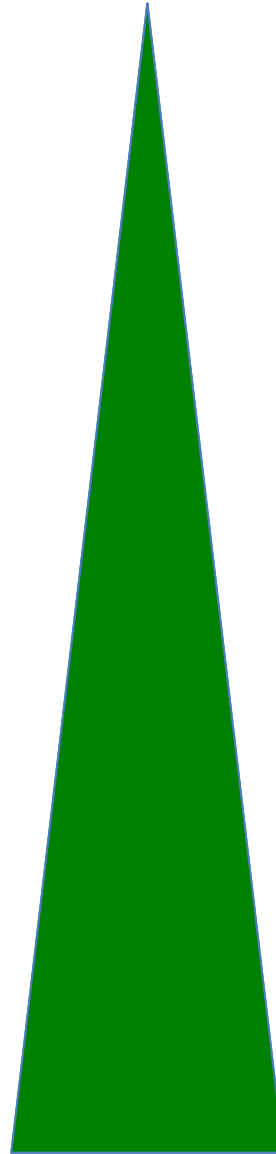
How we tend to view the healthcare world:



What it tends to be like:



- ✧ Order
- ✧ Agreement
- ✧ Rules
- ✧ Certainty



CHAOS

COMPLEX

COMPLICATED

SIMPLE



CHAOS

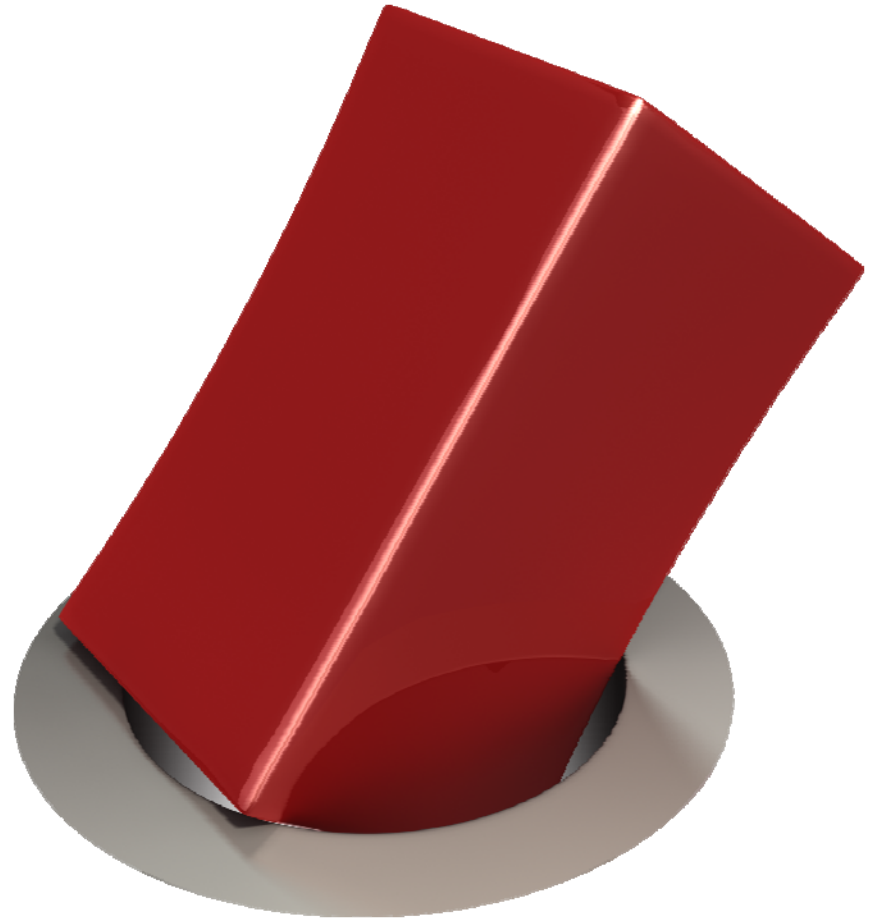
COMPLEX

COMPLICATED



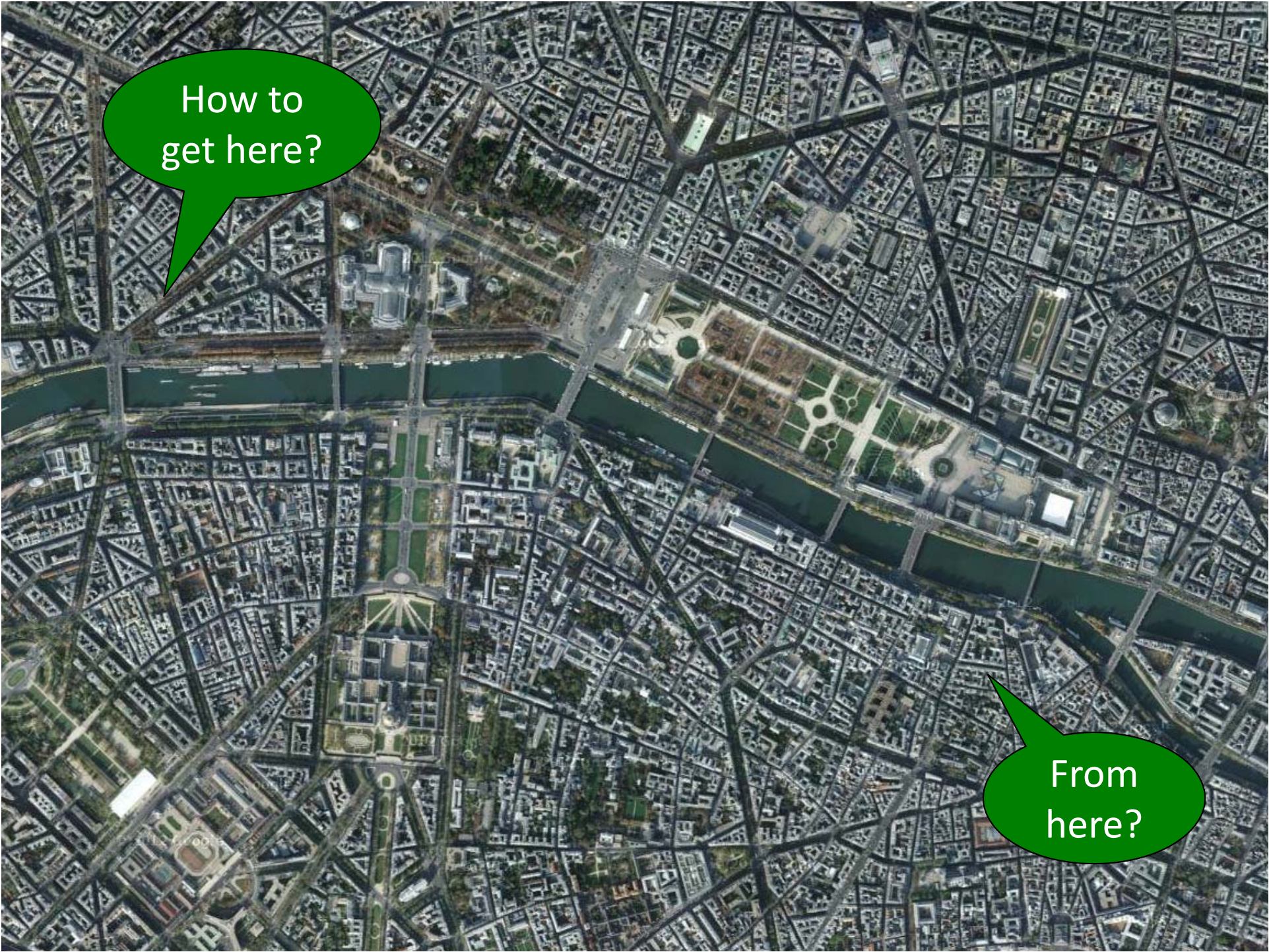
SIMPLE

*Many of our
healthcare
problems are
complex, but we
keep using tools
meant for simpler
problems*



Nibble





How to
get here?

From
here?

How to improve safety in a complex world?

Prevention

~

Resilience

- Education (knowledge, training, etc.)
- System design (supply, use, etc)
- Reminders (signs etc)
- Culture of Support (Ability to contain)
- Invitations (Ask me)
- Reminders (nudges, Codes: Nurse Jackson)

Need Both for a Truly Safe Culture

Minimum Specifications
(simple rules)

rather than

Maximum Specifications
(over specification)

Principles of This Work

- Participation is voluntary – everyone can opt in or opt out
- Bottom up, top down and sideways
- Make the invisible visible
- Include the unusual suspects
- Go slow to go fast
- Nothing about me without me
- Act your way into a new way of thinking

Culture *SHIFT*

- Taking time to think
- Practice-based evidence (social proof)
- Stories and relationships are trusted
- Culture change is simple
- Leaders need to step back
- Bottom up leadership from the front-line

The logo for IGNITE features a stylized flame icon above the word "IGNITE" in a blue, sans-serif font.

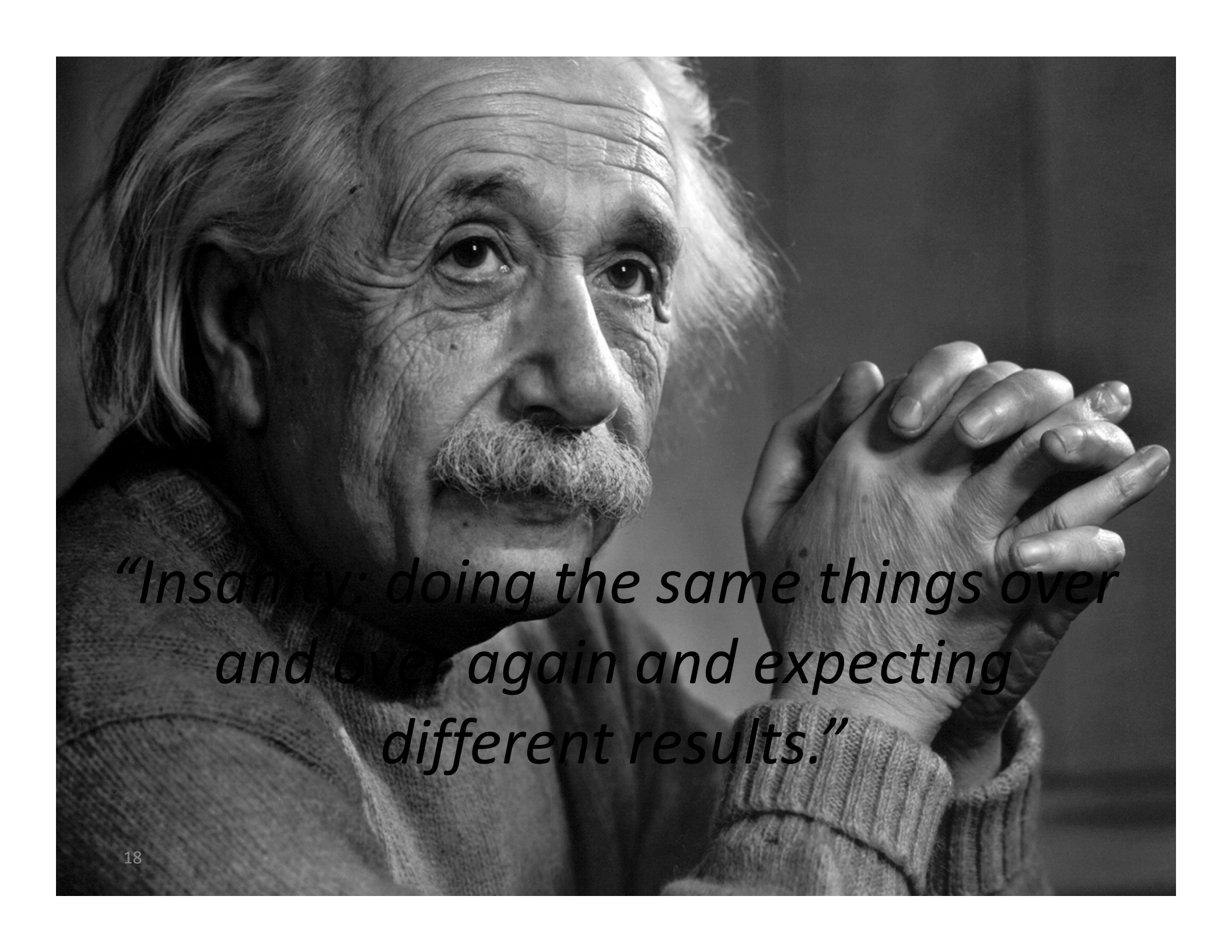
TRIZ



15% Solution



1-2-4-ALL

A black and white portrait of Albert Einstein, showing his characteristic wild hair and mustache. He is looking slightly to the right of the camera with a thoughtful expression. His hands are clasped together in front of him. The lighting is dramatic, highlighting the texture of his skin and hair.

“Insanity: doing the same things over and over again and expecting different results.”

